

# ***CENTRANZ***

**INFO@CENTRANZ.COM**

**1-816-650-3161**

*ALL Frictions and Steels are replaced throughout the entire transmission*

*New Complete Seal and Gasket Kit installed*

*ALL Ball Bearings are replaced*

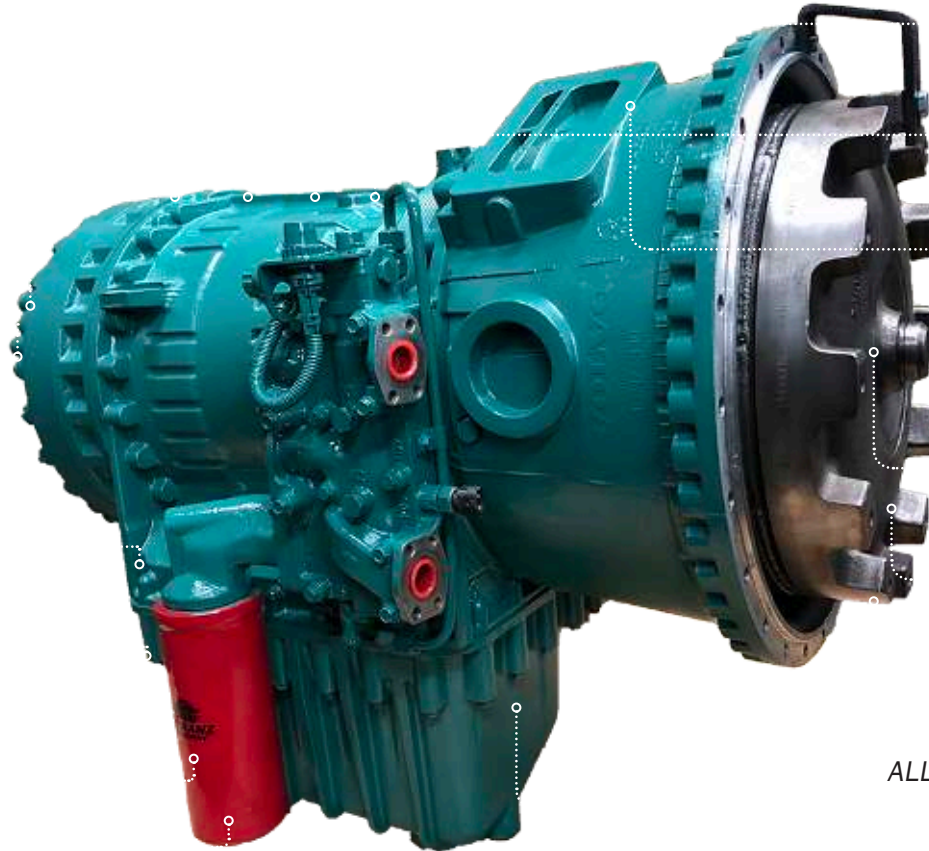
*Freshly painted, crated and ready for shipment*

*ALL Clutch Packs have Quick Connect Volvo style fittings installed into the pressure ports (and left on for future diagnostic use) to test that all clutch packs are within factory specifications during the Dynamometer (Dyno) Test*

*New Internal Suction Screen Filter installed*

*ALL PWM Solenoids, Pressure Monitors and Fluid Level Sensors are replaced with genuine OEM*

*New External Filter installed*



*ALL 8 of the Wear Bushings are replaced*

*ALL 4 Thrust Washers are replaced in the Range Section*

*Planetary Thrust Washers replaced as needed*

*Rebuilt Torque Converter is standard on all rebuilds. We are one of the only in-house Torque Converter rebuilders in the country*

*New higher Volume Charging Pump is installed in every rebuild*

*ALL Speed Sensors are replaced with New OEM*

*ALL Springs for the Control Valve (Valve Body) are replaced per OEM instructions*

*ALL Transmissions are Dyno Tested and undergo a 5-Step Evaluation: 1) Check Pressures. 2) Check to ensure No Leaks. 3) Check to ensure No Excessive Noise. 4) Function of Solenoid Valves are Evaluated. 5) Function of ALL Sensors are Tested using the TEM-CO TestBox.*

*Common failure hard parts are improved and manufactured in-house using the latest CNC equipment, including: Main Shafts, Ring Gears, K1, K2 and K3 Backing Plates, Clutch Drums, K1 and K2 Clutch Bodies – Plus Many More.*